

# The complete implant workflow – easiness with **one** software



The complete implant workflow  
**All in one software**

**1** CBCT imaging  
Planmeca ProMax® 3D



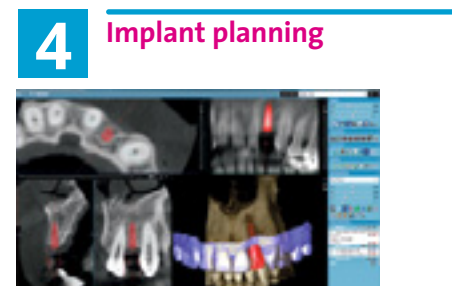
**2** Impression scanning  
Planmeca ProMax® 3D




**3** Smile designing



**4** Implant planning



**5** Implant guide design



**7** Final restorations  
Planmeca CAD/CAM



**6** Guide manufacturing  
Planmeca Creo™



## The complete implant workflow

- 1 CBCT imaging
- 2 Impression scanning



Acquire a CBCT image of the area of interest and scan an impression to create a digital model\* with any X-ray unit in the **Planmeca ProMax® 3D** family. Both images are conveniently accessed in the **Planmeca Romexis®** software and immediately available in the same patient database.



\*You can also import any digital model in standard STL format.

## The complete implant workflow

### 3 Smile designing

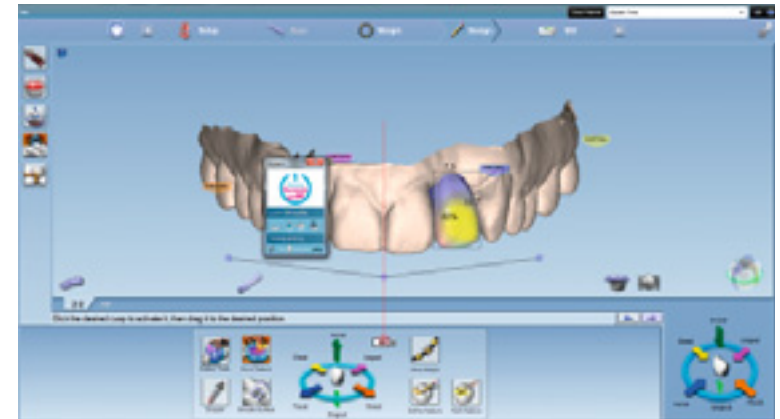
Use the **Planmeca Romexis® Smile Design** software and a 2D photo for quick smile simulation. Then take the completed smile design to the **Planmeca PlanCAD® Easy** software and create a 3D crown to use in top-down implant planning.



The implant image provides an opportunity for patient education.



Create a smile simulation for efficient communication with your patient.

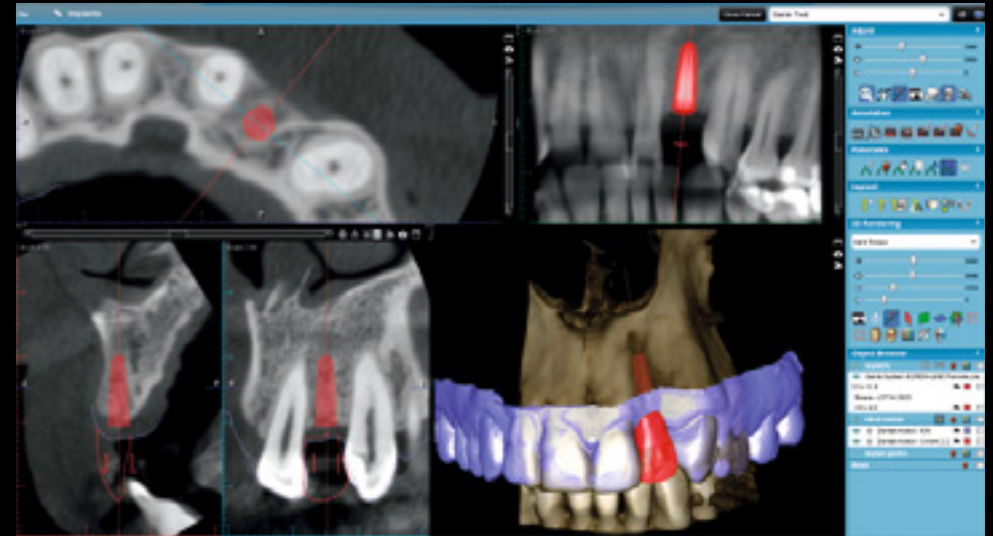
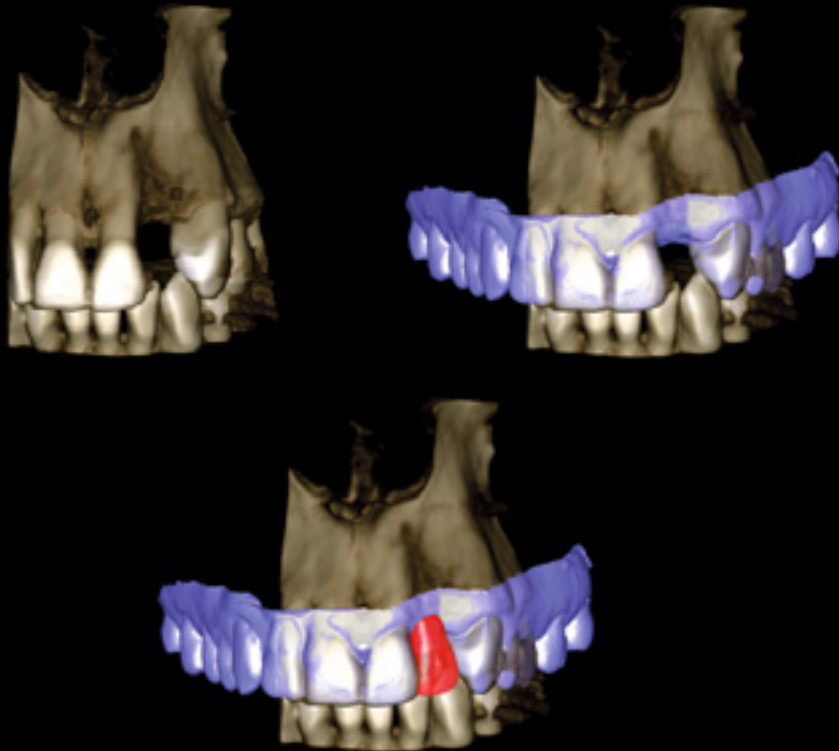


Utilise the 2D smile design in the CAD/CAM software for 3D crown creation.

# 4 Implant planning



Combine a patient's CBCT image, digital impression, and crown in the **Planmeca Romexis**® software to create a complete virtual setup for the implant plan. Select your favourite implant from our extensive implant library and find the optimal position for it with the software's easy-to-use implant tools.



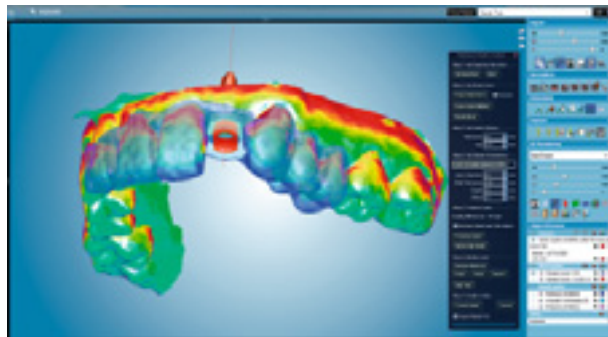
The Planmeca Romexis implant library includes implants from over 60 manufacturers.

## The complete implant workflow

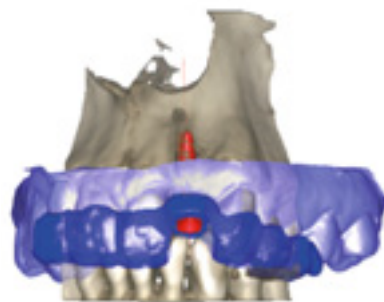
### 5 Implant guide design

### 6 Guide manufacturing

Stop guessing and start performing precise surgery with the help of accurate digital planning. Plan your implant guide\* with a few simple clicks in the **Planmeca Romexis**® software and create the guide with the **Planmeca Creo**™ 3D printer. You can also export the design in STL file format and manufacture the implant guide with any other suitable printer. Place the implant as planned with minimally invasive and accurate procedures.



Easy, efficient,  
and predictable  
implant placing.



New!



\*Coming soon

# 7 Final restorations

After osseointegration of the implant, use the **Planmeca PlanScan**® intraoral scanner to register the implant position by scanning the scan body. Next, design the abutment and suprastructure with the **Planmeca PlanCAD**® Premium software. You can mill the final restoration with the **Planmeca PlanMill**® 40 S unit, or send the STL files to a milling centre of your choice.



Achieve an optimal restorative result  
and maximised patient satisfaction



# Happy users



**Dr. Carlo Pizzo, DDS &  
Dr. Gioia Amico, DDS**  
A&P Clinic, Cittadella, Italy



*“With **Planmeca Romexis**® we can virtually place the exact dental implants we are going to use by choosing them from the integrated 3D implant library. This feature works amazingly well.”*

**Aki Lindén, CDT**  
Oral Lindent Hammaslaboratorio  
Helsinki, Finland



*“My patients have been very pleased to be able to genuinely be part of the process from the start. When the expectations and plans have been carefully reviewed to start with, the end result will more likely meet the expectations of the patient.”*

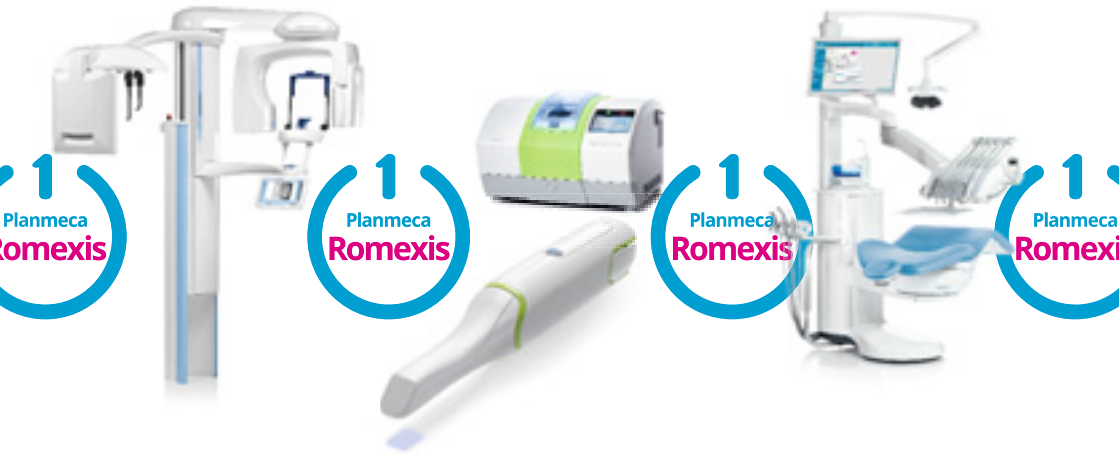
**Dr. Alexandros Manolakis**  
Manolakis Dental Clinic  
Thessaloniki, Greece



*“I don’t want to have different software for each procedure and software that doesn’t often communicate with one another. So I like to have one platform and do all my work in one platform – this is very important to me.”*



# One software for all.



*Planmeca Oy designs and manufactures a full line of industry-leading dental equipment, including 3D and 2D imaging devices, CAD/CAM solutions, dental care units and software. Planmeca Oy, the parent company of the Finnish Planmeca Group, is strongly committed to better care through innovation, and it is the largest privately held company in the field.*

## PLANMECA

Asentajankatu 6 | 00880 Helsinki | Finland | tel. +358 20 7795 500 | sales@planmeca.com | www.planmeca.com

Images may contain optional items not included in standard delivery. Available configurations and features may have country or area specific variations. Some products displayed above may not be available in all countries or areas. Rights for changes reserved.

Planmeca, All in one, Anatom Plus, Cobra, Comfy, DentreVac, Digital perfection, Economat Plus, Elegant, Flexy, Mini-dent, Perio Fresh, PlanEasyMill, Planmeca 4D, Planmeca AINO, Planmeca ARA, Planmeca CAD/CAM, Planmeca Chair, Planmeca Clarify, Planmeca Compact, Planmeca FIT, Planmeca Intra, Planmeca iRomexis, Planmeca Lumion, Planmeca Lumo, Planmeca Maximity, Planmeca Minea, Planmeca Minodent, Planmeca Minetto, Planmeca mRomexis, Planmeca Noma, Planmeca Online, Planmeca PlanCAD, Planmeca PlanCAM, Planmeca PlanClear, Planmeca PlanMill, Planmeca Planosil, Planmeca PlanPure, Planmeca PlanScan, Planmeca PlanView, Planmeca ProCeph, Planmeca ProFace, Planmeca ProID, Planmeca ProMax, Planmeca ProModel, Planmeca ProOne, Planmeca ProScanner, Planmeca ProSensor, Planmeca ProX, Planmeca Romexis, Planmeca Serenus, Planmeca SingLED, Planmeca Sovereign, Planmeca Ultra Low Dose, Planmeca Vision, Planmeca Verity, Planmeca Waterline Cleaning System, Planmeca Xtremity, Proline Dental Stool, ProTouch, Saddle Stool, SmartPan, SmartTouch, Trendy and Ultra Relax are registered or non-registered trademarks of Planmeca in various countries.

30003374/1016/en

