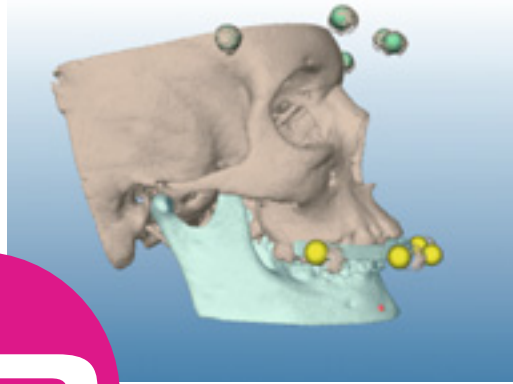


Planmeca 4D™ Jaw Motion Mandibular 3D movements in real-time



4D



Real-time jaw movement – in 3D

Planmeca 4D™ Jaw Motion is the only true CBCT integrated solution for tracking, recording, visualising and analysing jaw movement in 3D. It offers incomparable visualisation and measurement data of mandibular 3D movements in real-time – creating a fourth dimension in diagnostics.

Key components of

Planmeca 4D™ Jaw Motion

- CBCT image of a patient, for example a **Planmeca Ultra Low Dose™** image
- **Planmeca ProMax® 3D Mid** or **Planmeca ProMax® 3D Max** X-ray unit equipped with the **Planmeca ProFace®** face photo option
- **Planmeca Romexis® 4D Jaw Motion** software module
- Special glasses and a lower jaw tracking device with light-weight reflective spheres

Applications include

- Temporomandibular disorder (TMD) diagnostics
- Mandibular movement analysis
- Articulator programming
- Condyle-Fossa relationship during jaw movement
- Preoperative planning
- Postoperative treatment verification

Key features:

- The only CBCT integrated jaw tracking solution
- Track, visualise and record real-time jaw movement in 3D
- Visualise movements in the **Planmeca Romexis®** software without delay
- Record movements for later use and analysis
- Measure and visualise the movement path of one or more points of interest in a 3D image
- Export movement and measurement information to 3rd party software in an XML or CSV format for analyses and treatment planning
- Align digital dental models with a CBCT image for occlusion analysis

Planmeca 4D™ Jaw Motion solution will be available soon.

PLANMECA

Asentajankatu 6 | 00880 Helsinki | Finland | tel. +358 20 7795 500 | sales@planmeca.com | www.planmeca.com

Images may contain optional items not included in standard delivery. Available configurations and features may have country or area specific variations. Some products displayed above may not be available in all countries or areas. Rights for changes reserved.

Planmeca, All in one, Anatomat Plus, Cobra, Comfy, DentoVac, Digital perfection, Economat Plus, Elegant, Flexy, Mini-dent, Perio Fresh, PlanEasyMill, Planmeca 4D, Planmeca AINO, Planmeca ARA, Planmeca CAD/CAM, Planmeca Chair, Planmeca Clarify, Planmeca Compact, Planmeca FIT, Planmeca Intra, Planmeca iRomexis, Planmeca Lumion, Planmeca Lumo, Planmeca Maximity, Planmeca Minea, Planmeca Minodent, Planmeca Minetto, Planmeca mRomexis, Planmeca Noma, Planmeca Online, Planmeca PlanCAD, Planmeca PlanCAM, Planmeca PlanClear, Planmeca PlanMill, Planmeca Planosil, Planmeca PlanPure, Planmeca PlanScan, Planmeca ProCeph, Planmeca ProFace, Planmeca ProFD, Planmeca ProMax, Planmeca ProModel, Planmeca ProOne, Planmeca ProScanner, Planmeca ProSensor, Planmeca ProX, Planmeca Romexis, Planmeca Serenus, Planmeca SingLED, Planmeca Sovereign, Planmeca Ultra Low Dose, Planmeca Vision, Planmeca Verity, Planmeca Waterline Cleaning System, Planmeca Xtremity, Proline Dental Stool, ProTouch, Saddle Stool, SmartPan, SmartTouch, Trendy and Ultra Relax are registered or non-registered trademarks of Planmeca in various countries.

